

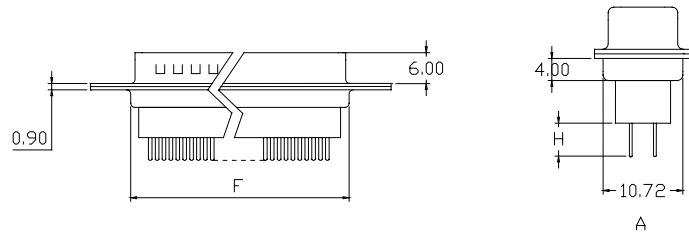
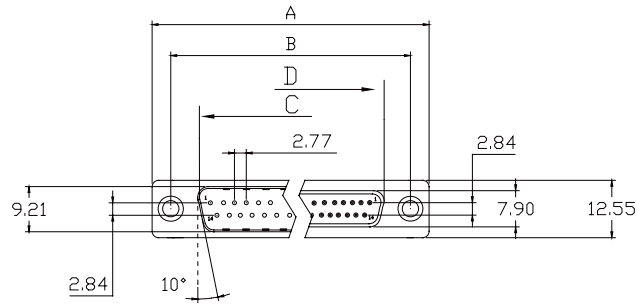
BY	CHK	REVISION RECORD MODIFICATIONS	DATE	REV.
ALLEN		RELEASE TO PRODUCTION	2007,9,10	1.0

SPECIFICATION

Current Rate: 5 AMP
 Insulation Resistance: 1000mΩMin
 Contact Resistance: 20mΩ Max
 Dielectric voltage: 1000V AC for one minute
 Operation Temperature: -55°C to +105°C

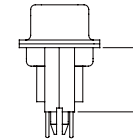
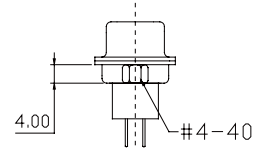
MATERIAL

Insulator: Polyester,UL94v-0
 ©Standard: P.B.T
 Contact Pin F: Phosphor Bronze
 M: Brass
 Shell-Steel zinc plated or tin plated or nickel plated Screw-Brass nickel plated



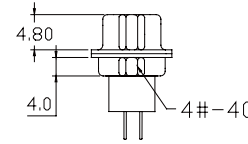
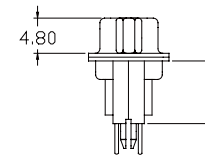
Dimensions

POSITION	A	B	C	D	E	F	H	I
9	30.81	24.99	16.92	16.33	11.08	19.18	3.80	11.00
15	39.14	33.32	25.50	24.66	19.39	27.51	5.20	12.70
26	53.04	47.04	38.96	38.38	33.24	41.00	7.20	14.50
44	69.32	63.50	55.42	54.84	49.86	57.71		



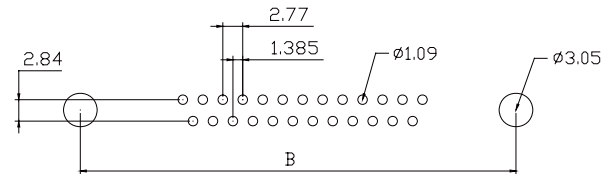
D

F



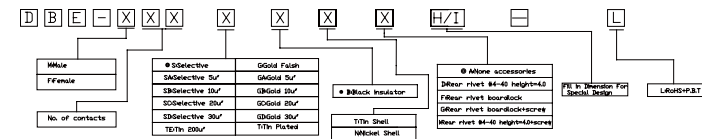
G

I



Recommended PCB Layout
(PCB TOLERANCE±0.05)

ORDER INFORMATION



APPRO	CHECK	DRAWN	PART NO.	DBE-XXXXXXXXH/I-L		
			ITEM NO.			
			DRAW NO.			
			UNIT	mm	SCALE	no
			TOLER		NO.	

DESCRIPTION

Tel: 0769 2202068 Fax: 0769 2202069 E-mail: sales@vigortec.com

